

- 1
- 2
- 3
- 4
- 5
- 6
- 7
- 8
- 9
- 10
- 11
- 12
- 13
- 14
- 15
- 16
- 17
- 18

BASE

Glass-fibre reinforced polyamide based (PA) technopolymer, black colour, matte finish.

DAMPING ELEMENT

Polyurethane-based rubber (PUR), natural colour, hardness 50 Shore A.

FEATURES

Have been designed to damp vibrations, shocks and noises produced by moving bodies or non-balanced vibrating masses of equipment and machines which can cause:

- malfunctioning and reduction of the machine lifespan and/or of the adjacent ones;
- damage to operator's health;
- noise.

TECHNICAL DATA AND GUIDELINES FOR THE CHOICE

The maximum static load value shown in the table indicates the static load for a specific load of 0.4 N/mm² to which the damping element can be subjected in order to have optimal vibration absorption.

The table shows also the values (l2) of elastic deformation with a load of max 0.6 N/mm² in case of a dynamic load.

The effectiveness of the damping depends on the ratio between the disturbance frequency of the machine and the natural frequency of the damping foot.

The natural frequency of the base depends on the material, the geometry, and the specific load [N/mm²] to which it is subjected.

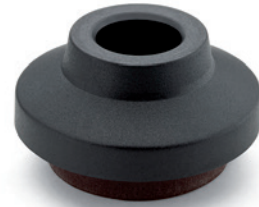
The specific load is obtained by dividing the applied load by the support area of the damping element.

Once the specific load is known, the natural frequency of the foot can be obtained from the graph in figure 1.

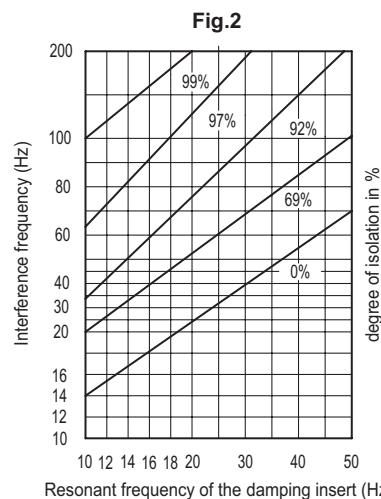
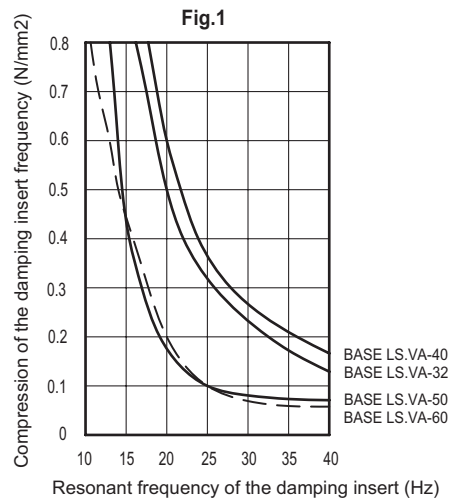
The damping starts when the ratio between the disturbance frequency of the machine and the natural frequency of the damping foot is greater than $\sqrt{2}$. The greater the difference between the interference frequency of the machine and the natural frequency of the foot, the greater the damping (see figure 2).

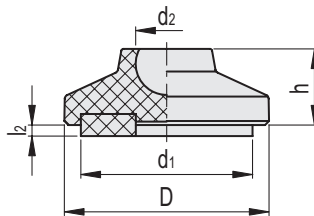
Example:

1. Expected load on the foot = 150 N
2. Specific load BASE LS.VA-32 = $150/239 = 0.63$ N/mm²
3. Specific load BASE LS.VA-40 = $150/452 = 0.33$ N/mm²
4. BASE LS.VA-40 is therefore chosen as the specific load of the example is less than 0.4 N/mm², which is the optimal damping value.
5. Entering the graph in figure 1 with a specific load of 0.33 N/mm² we obtain a natural frequency of 26 Hz (curve BASE LS.VA-40).
6. Entering the graph in figure 2, with 26 Hz, the chosen foot will start to dampen frequencies greater than 32 Hz. A damping of 69% is obtained for a machine frequency of 61 Hz. A damping of 92% is obtained for a machine frequency of 85 Hz.



ELESA Original design





Code	Description	D	d1	l2	d2	h	l2			Area damping insert [mm ²]	Max. limit static load* [N]	⚖️
							0 [N/mm ²]	0.4 [N/mm ²]	0.6 [N/mm ²]			
340124	LS.VA-32-8.5	32	23.1	5.3	8.5	15	5.3	4.8	4.6	239	96	12
340126	LS.VA-32-14	32	23.1	5.3	14	15	5.3	4.8	4.6	239	96	12
340130	LS.VA-40-8.5	40	30	6	8.5	17	6	5.6	5.4	452	180	20
340132	LS.VA-40-14	40	30	6	14	17	6	5.6	5.4	452	180	20
340134	LS.VA-50-8.5	50	40	6	8.5	19	6	5	4.7	1000	400	31
340136	LS.VA-50-14	50	40	6	14	19	6	5	4.7	1000	400	31
340138	LS.VA-60-14	60	50.5	5	14	24	5	3.9	3.5	1709	680	50
340140	LS.VA-60-24	60	50.5	5	24	24	5	3.9	3.5	1709	680	45

* See paragraph: Technical data and guidelines for the choice.